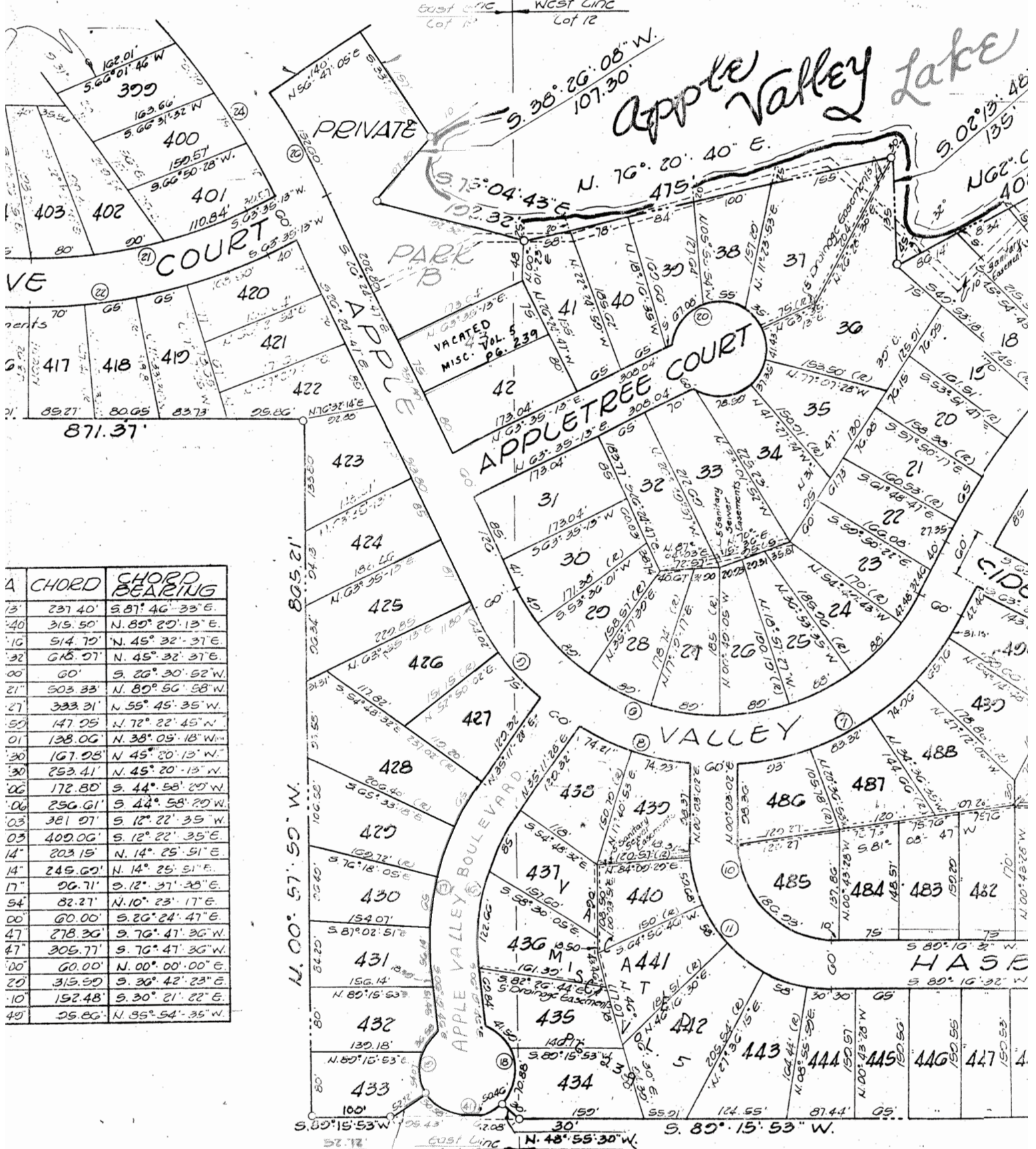


# IARD HILLS P

A R D T O W N S H I P, K N O X C



A	CHORD	CHORD BEARING
13'	231.40'	S. 81° 46' 33\" E.
40'	315.50'	N. 89° 20' 13\" E.
10'	514.70'	N. 45° 32' 31\" E.
32'	618.07'	N. 45° 32' 31\" E.
00'	60'	S. 26° 30' 52\" W.
21'	503.33'	N. 80° 56' 58\" W.
27'	333.31'	N. 55° 45' 35\" W.
50'	147.05'	N. 72° 22' 45\" N.
01'	138.06'	N. 38° 05' 18\" W.
30'	167.08'	N. 45° 20' 13\" W.
30'	253.41'	N. 45° 20' 13\" W.
06'	172.80'	S. 44° 58' 20\" W.
06'	256.61'	S. 44° 58' 20\" W.
03'	381.07'	S. 12° 22' 35\" W.
03'	409.06'	S. 12° 22' 35\" E.
14'	203.15'	N. 14° 25' 51\" E.
14'	245.60'	N. 14° 25' 51\" E.
17'	206.71'	S. 12° 31' 25\" E.
54'	82.27'	N. 10° 23' 17\" E.
00'	60.00'	S. 26° 24' 47\" E.
47'	278.36'	S. 76° 41' 36\" W.
47'	305.71'	S. 76° 41' 36\" W.
00'	60.00'	N. 00° 00' 00\" E.
20'	315.50'	S. 36° 42' 23\" E.
10'	192.48'	S. 30° 21' 22\" E.
49'	25.86'	N. 85° 54' 35\" W.